



# Peppol

The future is open

## Message Level Acknowledgement

Brussels F2F - November 2022

*By Simon Foster*

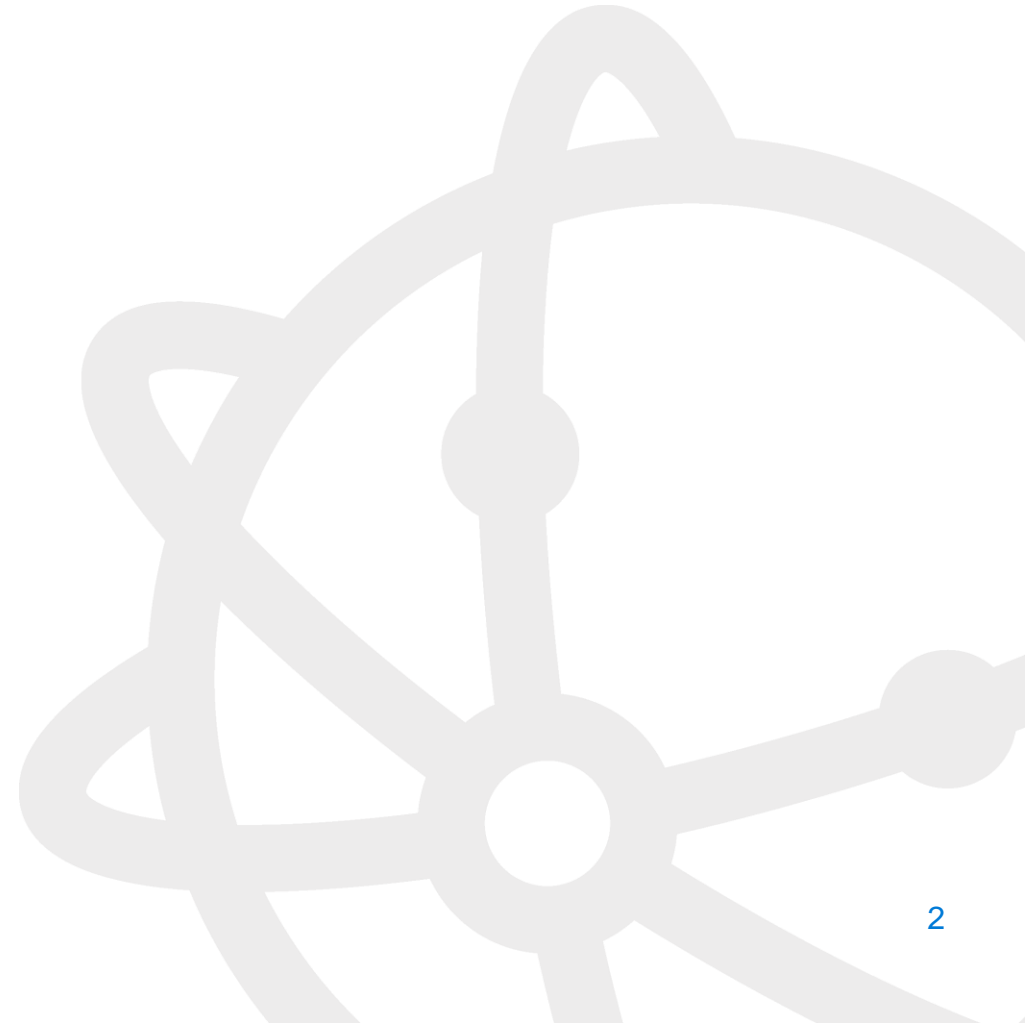
[www.peppol.org](http://www.peppol.org)

Peppol is owned by OpenPeppol AISBL

# Agenda Items

---

1. Mandate Description
2. Types of Response Messages
3. Problem Statements
4. Next Steps



## Mandate: Outcome and Goal

1. The Message Level Acknowledgement (MLA) Work Group is tasked with:
2. Developing an MLA BIS that meets the needed requirements.
3. Determine the routing mechanism of the MLA BIS.
4. Develop the policy on the usage of the MLA BIS.
5. Define the final naming for the MLA BIS. MLA is a working name for the Work Group.

Any proposed changes will need to be initiated through a Request for Change and managed through the Peppol change management process – including consultation of SPs, PAs and other Peppol communities.

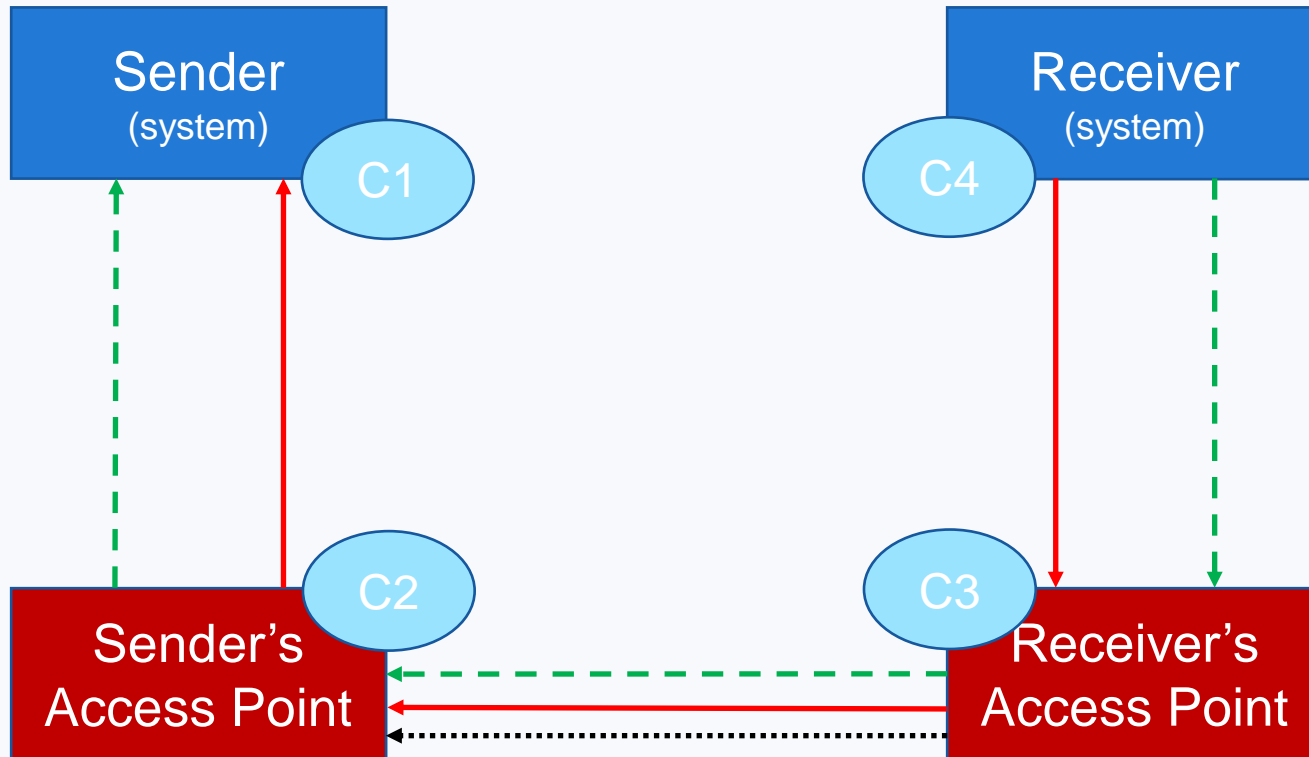
# Deliverables

The WG will develop the following deliverables:

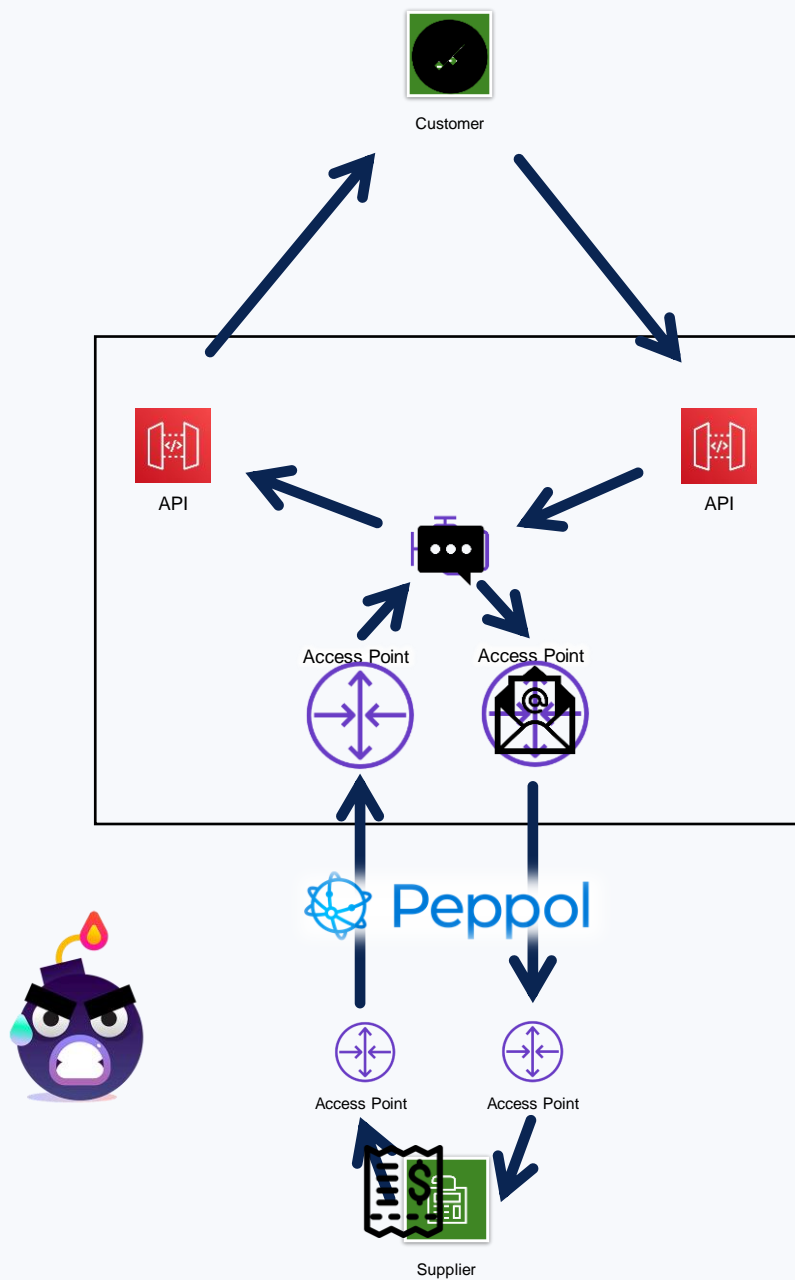
- Technical documentation for the MLA BIS
- A proposal for the usage of the MLA throughout the Peppol Network (if possible), including impact analysis
- An implementation plan
- A migration plan

Consultation with broader stakeholder groups, including SPs, PAs and other Peppol communities, will be undertaken as part of the Peppol change management process.

# Types of Response Messages



- Business level response, e.g. Invoice Response Message
- ⋯→ Transport acknowledgement (AS4)
- - → Message level response



Transaction Response (AS4)

Message Response

Business Response

# Current Situation

We do not know the state of Peppol messages in the network:

- MLR is limited to syntax validation
- MLR is addressed from C4 to C1
- MLR is not mandatory
- Transport acknowledgement (AS4) is C3 to C2 and synchronous
- Business Response messages (invoice response, order response) are not mandatory

This is solved inconsistently and without specifications:

- Using MLR to indicate state of C4
- 500 Error on AS4 message when schematron validation fails

Don't make  
me pick up  
the phone





A photograph of a warehouse aisle. The aisle is lined with high industrial shelving units. Each shelf is filled with cardboard boxes, many of which are stacked on wooden pallets. The perspective is from the end of the aisle, looking down its length. The lighting is bright, with a strong light source on the right side, creating a lens flare effect. The overall scene is a well-organized storage area for goods.

# Problem Statement 1

Service providers need reliable status of message delivery to C4

- How should C3 deliver to C2?  
How to handle multiple C2s?
- How to handle C2s without receive capability?



# Problem Statement 2

Invoice Response sending capability cannot be identified

- Compare to Ordering (Order + Order Response) and Order Only?
- Should we split BIS Billing into Billing (Invoice/CN and Response) and Bill Only?



# Problem Statement 3

Inconsistent specifications across different Business Response Msgs

- Attachments + signatures
- UBL versions
- Other ...

85% 45%

75%

248%

35%

65%

```
struct group_info init_groups = { .usage = GFP_USER,
struct group_info *groups_alloc(int gidsetsize)
struct group_info *group_info;
int nblocks;
int i;

nblocks = (gidsetsize + NGROUPS_PER_BLOCK - 1) / NGROUPS_PER_BLOCK;
/* Make sure we always allocate at least one indirect block */
nblocks = nblocks ? 1;
group_info = kmalloc(sizeof(*group_info) + nblocks*sizeof(gid_t *), GFP_USER);
if (!group_info)
return NULL;
group_info->ngroups = gidsetsize;
group_info->nblocks = nblocks;
atomic_set(&group_info->usage, 1);

if (gidsetsize <= NGROUPS_SMALL)
group_info->blocks[0] = group_info->small_block;
else {
for (i = 0; i < nblocks; i++) {
gid_t *b;
b = (void *)__get_free_page(GFP_USER);
if (!b)
goto out_undo_partial_alloc;
group_info->blocks[i] = b;
}
}
return group_info;

out_undo_partial_alloc:
while (--i >= 0) {
free_page((unsigned long)group_info->blocks[i]);
}
kfree(group_info);
return NULL;
}
EXPORT_SYMBOL(groups_alloc);

void groups_free(struct group_info *group_info)
{
if (group_info->blocks[0] != group_info->small_block) {
```



# Problem Statement 4

Tracking sets of documents across different BISes

- Order + Despatch + Invoice
- Catalogue + Order + Invoice + Payment
- Pre-award + Post-award?



## Next Steps

- Validate Problem Statements with WG members
- Prioritise which to work on first
- Create sub-group to do work

It's not too late to get involved! Contact OO



# Peppol

The future is open

## Thank you!

For more: see our workgroup confluence page:

<https://openpeppol.atlassian.net/wiki/spaces/OWG/pages/2946990083/Work+group+MLA>

[www.peppol.org](http://www.peppol.org)

Peppol is owned by OpenPeppol AISBL